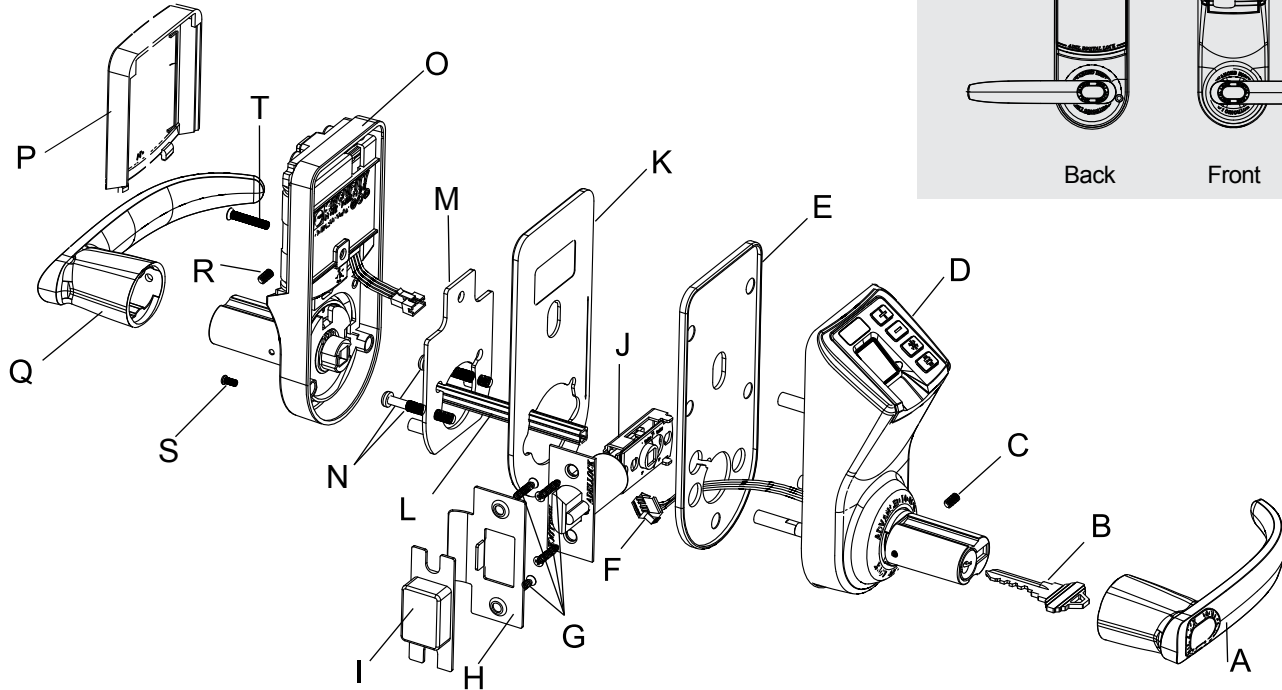


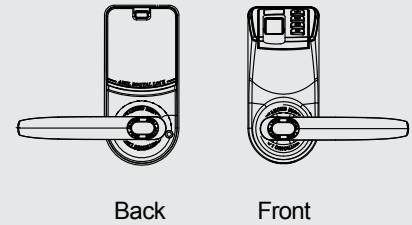
Biometric Security Door Lock

Installation Instructions

Diagram of lock



Lock body



- | | | |
|--|---|---|
| A. Front lever handle | J. Latch | Q. Back lever handle |
| B. Mechanical key | K. Back lock body gasket | R. Hexagonal screws for fixing the back handle |
| C. Hexagonal screws for fixing the front handle (M4*7) | L. Spindle | S. M4*10 screw |
| D. Front lock body | M. Back plate | T. 3 different set of screws are provided |
| E. Front lock body gasket | N. 3 different set of screws are provided | M5*20, M5*30 and M5*30, the screws are used to fix the position of the inner metal plate. |
| F. Wire connector | O. Back lock body | |
| G. Screw | P. Battery cover | |
| H. Strike plate | | |
| I. Strike box | | |

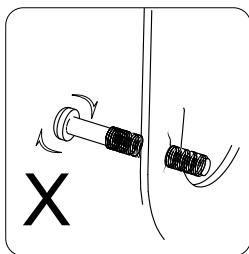
The checklist of spare parts

Diagram code	Quantity	Size (in/mm)	Appropriate for door thickness (in/mm)
C	1	(M4*7)	
R	1	(M4*7)	
S	2	(M4*10)	1-3/16" - 2-3/8" (30mm - 60mm)
N	2	(M5*20)	1-3/16" - 1-9/16" (30mm - 40mm)
		(M5*30)	1-9/16" - 1-31/32" (40mm - 50mm)
T	1	(M5*40)	1-31/32" - 2-3/8" (50mm - 60mm)

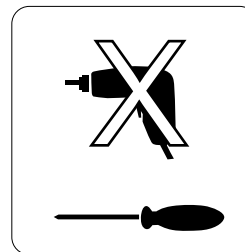
Note: N/T please use the appropriate screw set based on your own door thickness.

Before installation :

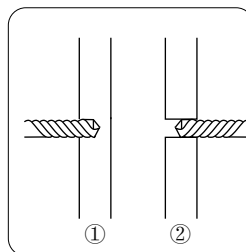
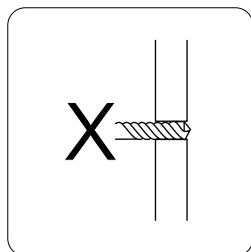
1、 To ensure a successful installation, please do not use power tools to tighten the screws to avoid damage on the screw.



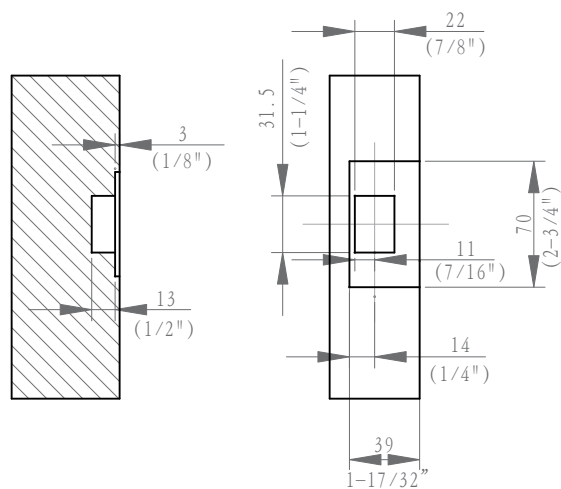
2、 Use the correct fixed-screw tools, and wear eye protection.



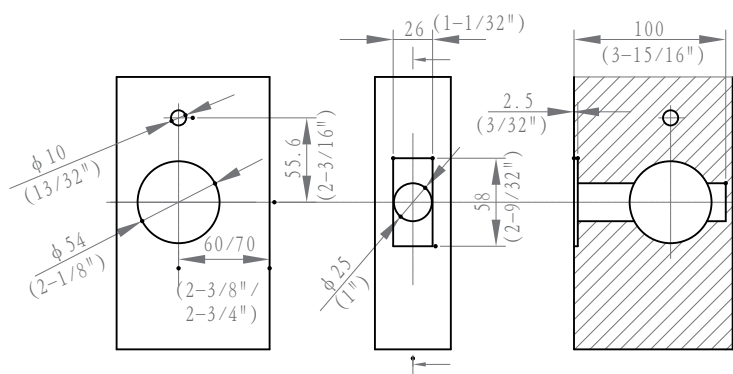
3、 In order to prevent any unnecessary damage to the door, please drill the holes from both sides of the door separately.



1 Door-drilling mm/in



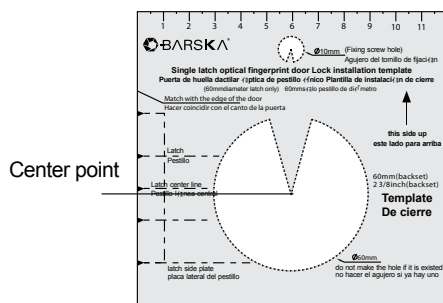
Door frame preparation



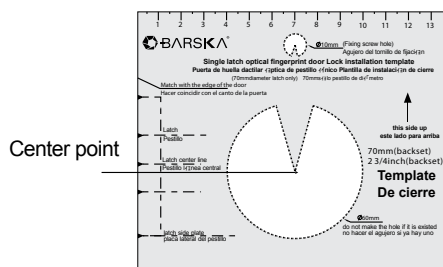
Door-drilling Diagram

Template for new door

Paper template: the 2 3/8" [60mm] backset or 2 3/4" [70 mm] backset



2 3/8" [60mm] backset 2 3/8" [60mm]

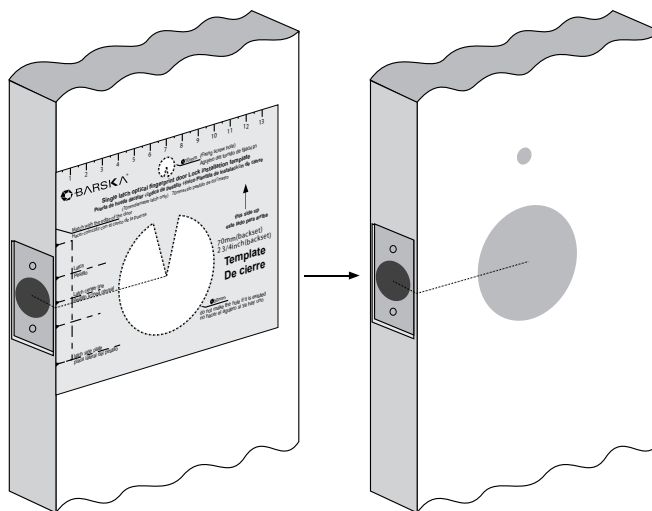


2 3/4" [70 mm] backset 2 3/4" [70 mm]

Door Preparation

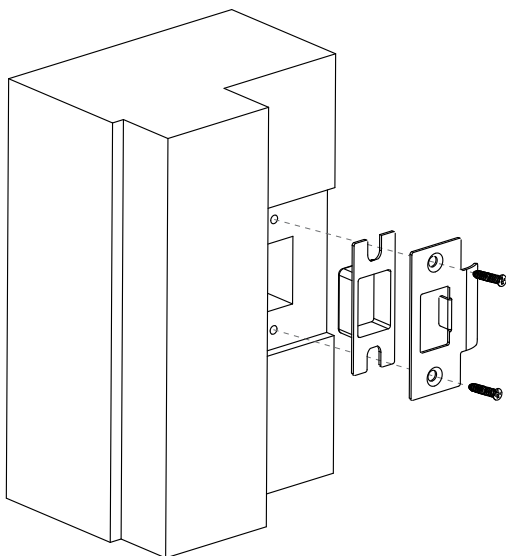
Note: Drill from both sides of the door to prevent unsightly damage.

1. Determine which template will fit your installation (either the 2 3/8" [60mm] backset or 2 3/4" [70 mm] backset)
2. Place appropriate paper template (supplied) onto door and mark for holes. Next drill the hole.

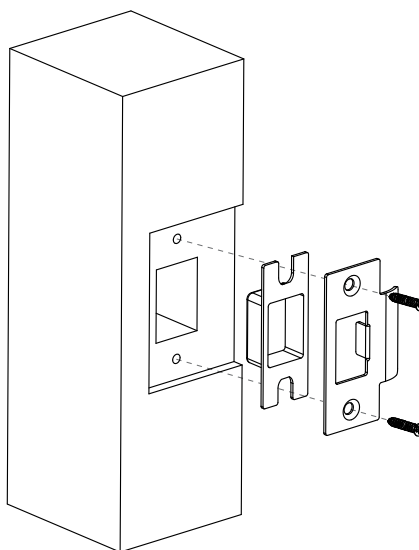


2 Installing the strike plate

1. Mark location of strike on the door frame, making certain that the strike opening is aligned with latch bolt.



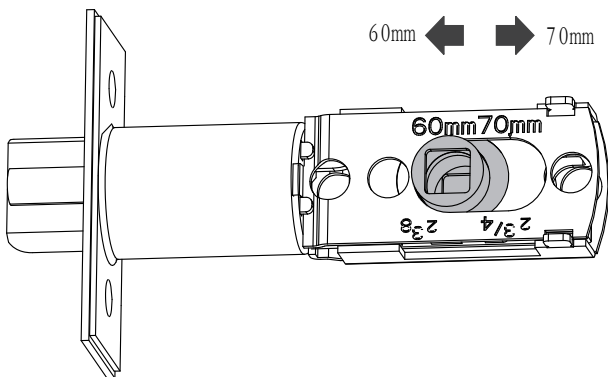
Type T-door's installation diagram.



General door's installation diagram

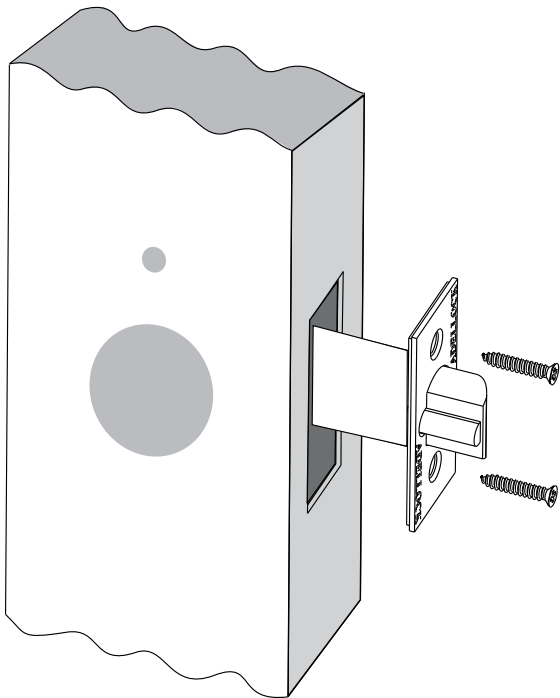
3 Installing Latch

- ① 2 3/8" [60mm] backset or 2 3/4" [70 mm] backset

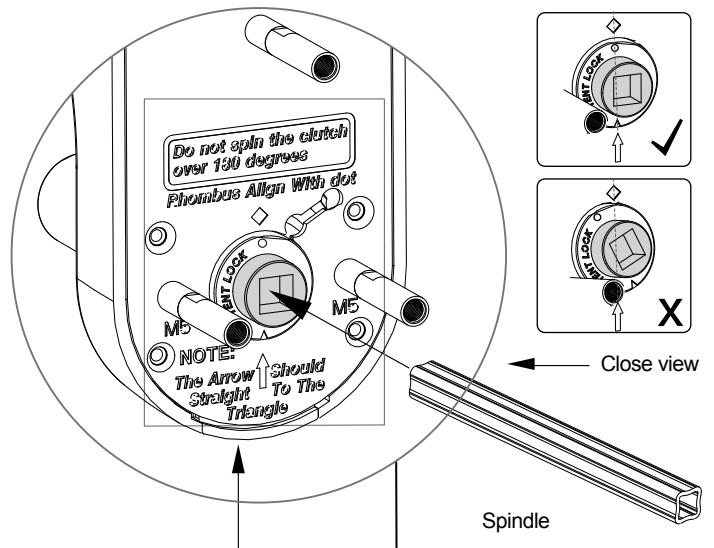


The latch has two backsets available: 2 3/8" [60mm] backset or 2 3/4" [70 mm] backset

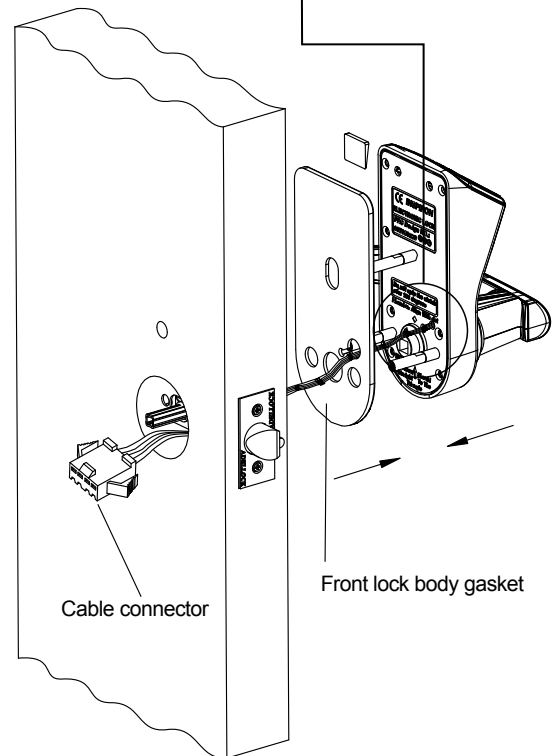
- ② Secure the latch to the door using two wood screws supplied. Latch unit face plate must be flush with door.



4 Installing spindle, and front lock body

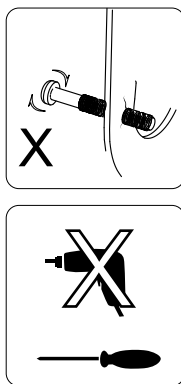
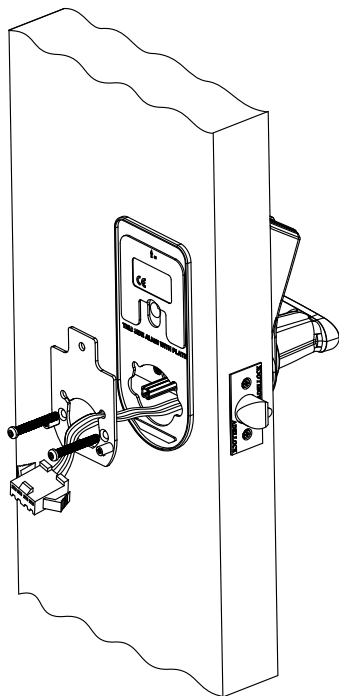


Very important note:
As the photo shows there is an arrow pointing up to the small triangle. This is the only position where the clutch can be activated during normal operation.



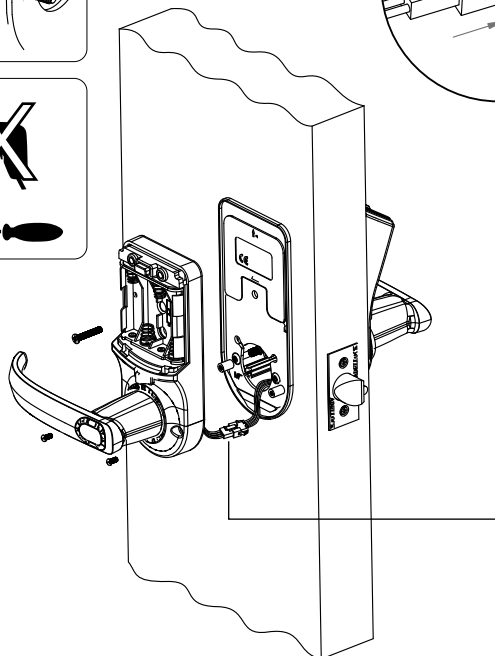
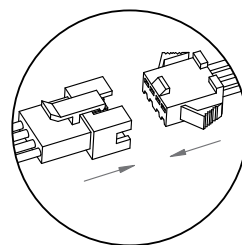
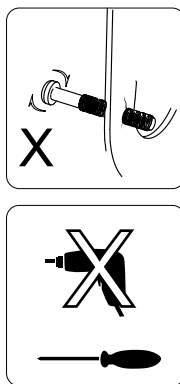
Note:
The wire goes under the latch

5 Installing the back plate and back lock body gasket



1. The back plate fits into the back lock body gasket
2. Secure the back plate and back lock body gasket with two M5*L screws

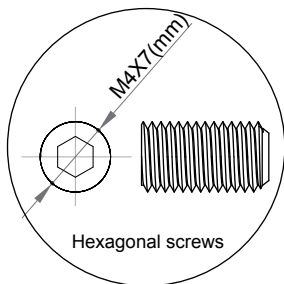
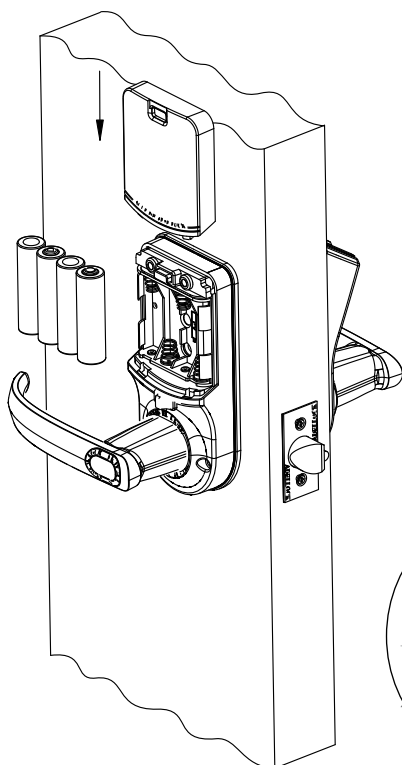
6 Installing the back lock body



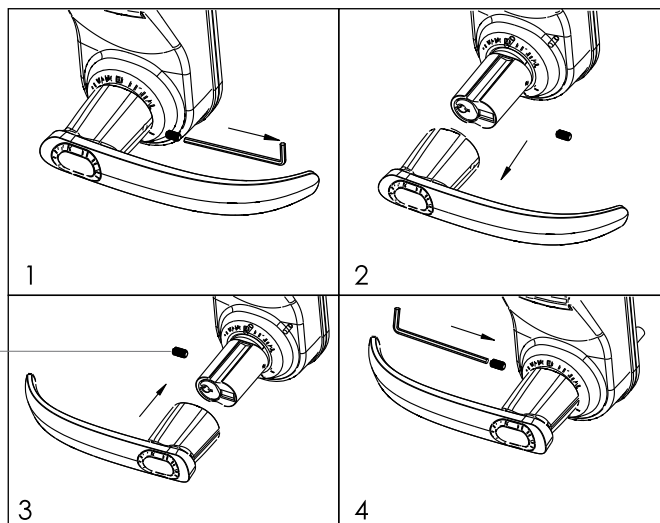
1. Connect the cable as shown
2. Push the wire connector into the hole under the latch
3. Secure the back lock body with two M4*8 screws and one M4*L

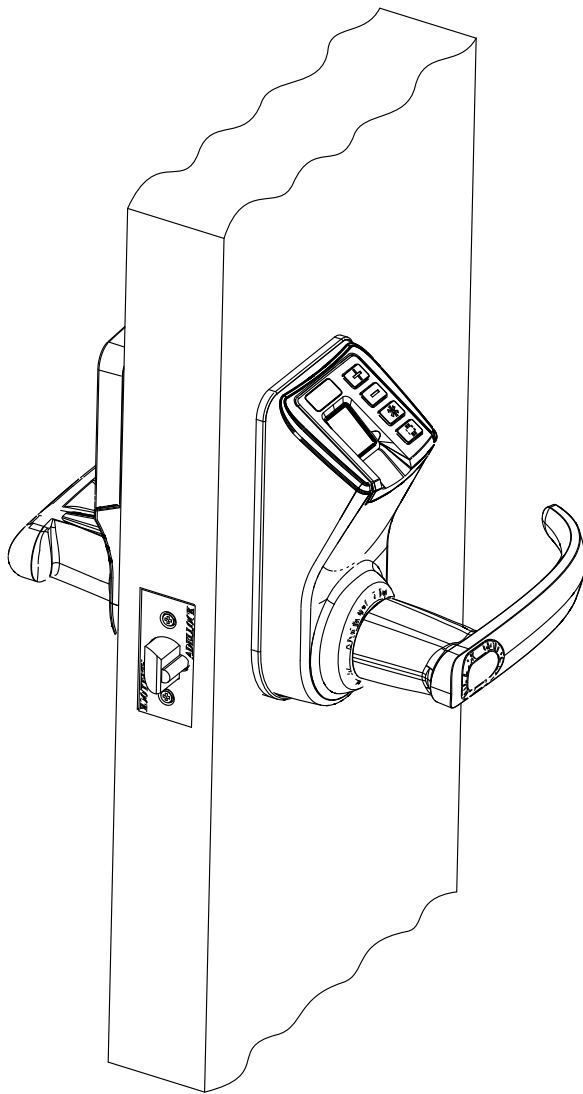
7 Battery

1. Put the batteries in and install the battery cover
2. Handle lever is field changeable, assemble or disassemble the handle lever with the tool supplied.

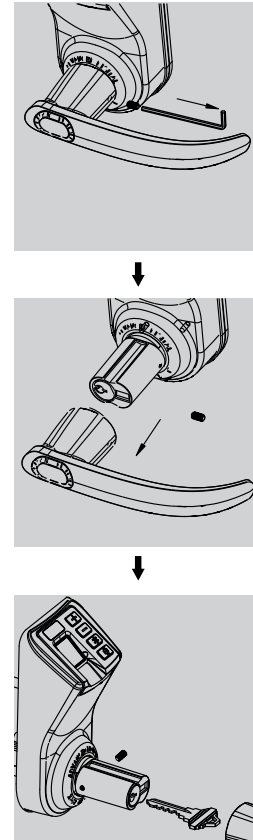


Note: field changeable handle lever





How to use mechanical key



1. Rotate the inside handle lever and hold. Ensure that the latch is fully retracted and flush with the latch face plate. Release the inside handle lever, the latch should be fully extended.
2. After batteries putting in the lock, it is going in a normal situation if the latch is retracted inside once rotating the indoor handle and holds it, and also the latch is fully extended once releasing the indoor handle. Please see the following diagrams in Figure 1.
3. Place your finger on the fingerprint sensor, you should see the sensor is flashing with red LED, the number display shows "- -", a long beep, a green light and a motor clutch sound. Rotate the front handle lever and hold. Ensure that the latch is fully retracted.
4. With the door open, verify functionality of the mechanical key override as shown. Take off the front handle lever, insert the mechanical key, turn the key to vertical position then rotate the handle bar. Ensure the latch is fully retracted.

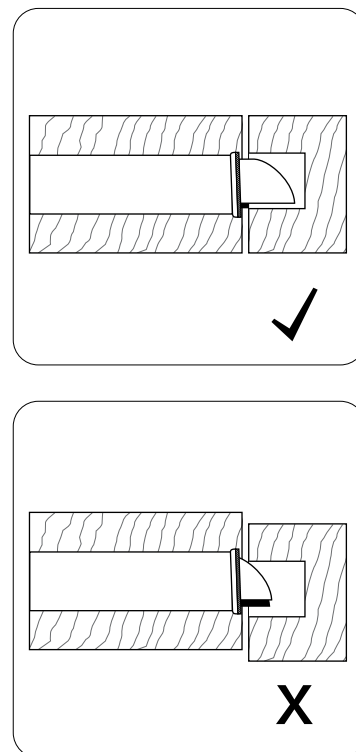


Figure 1